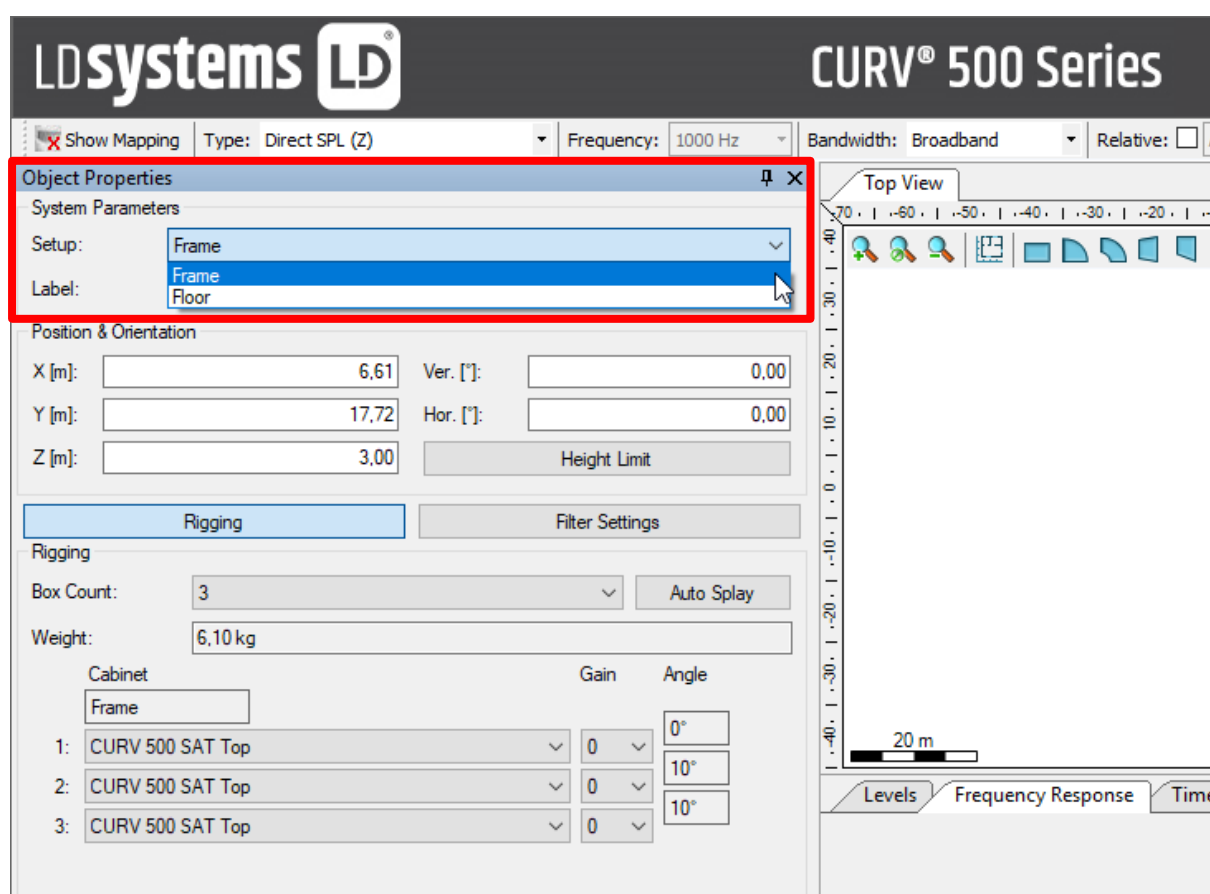


CURV 500 GLL V0.4 EASE Focus 3 File Configuration Guide

Due to a software issue it is not possible to use CURV500 presets for different loudspeaker combinations in EASE Focus 3. Users must set up the loudspeaker combination and choose the corresponding filter manually.

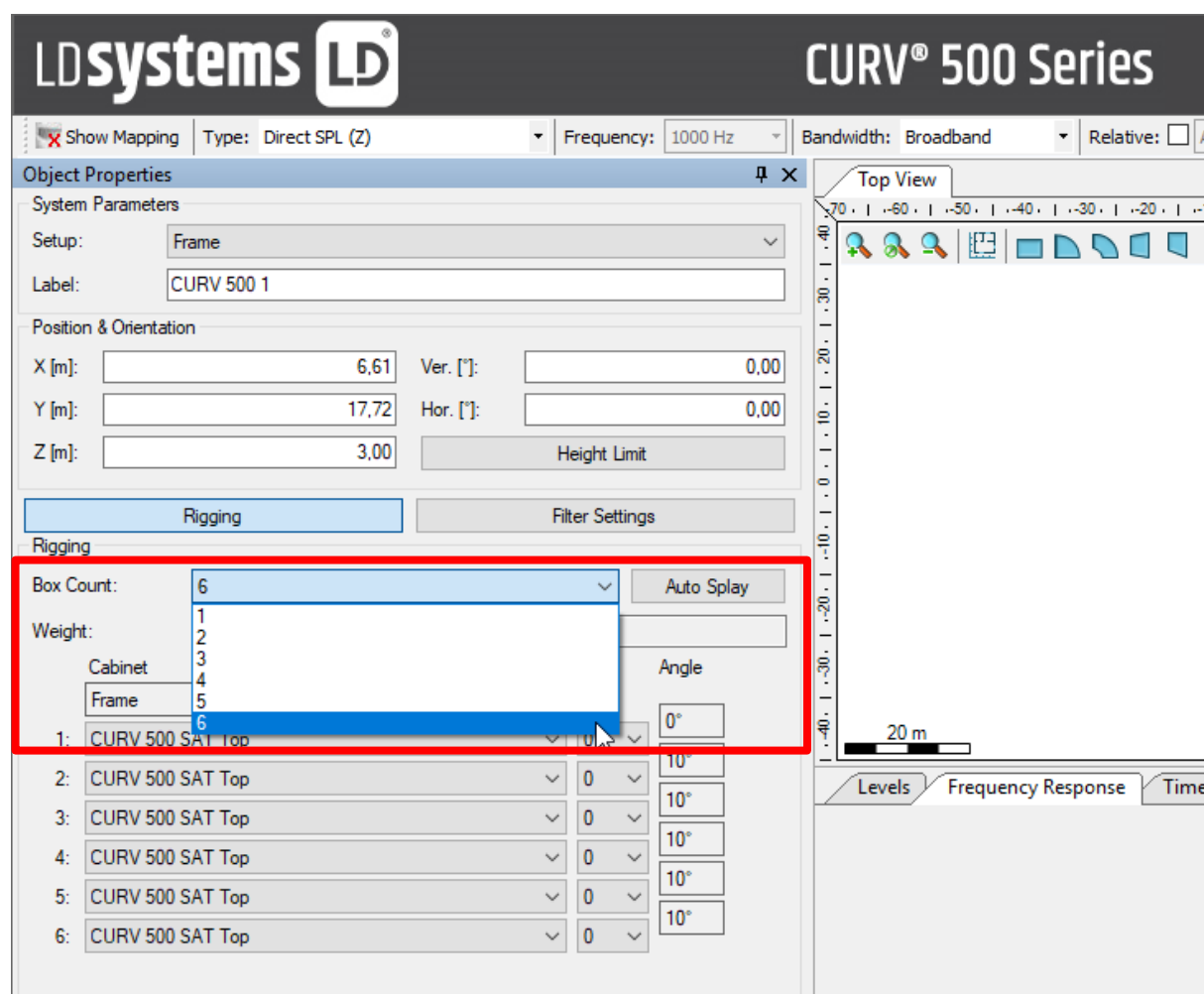
LOUDSPEAKER COMBINATION SETUP

Under "System Parameters" in the "Setup" drop-down menu, Users should define the loudspeaker type.



- Frame: For any satellite combination
- Floor: For CURV500 series subwoofer selection
 - CURV 500 iSUB
 - CURV500 SUB, for CURV500 SE (subwoofer extension for CURV 500 Portable Array System)
 - CURV500 TS

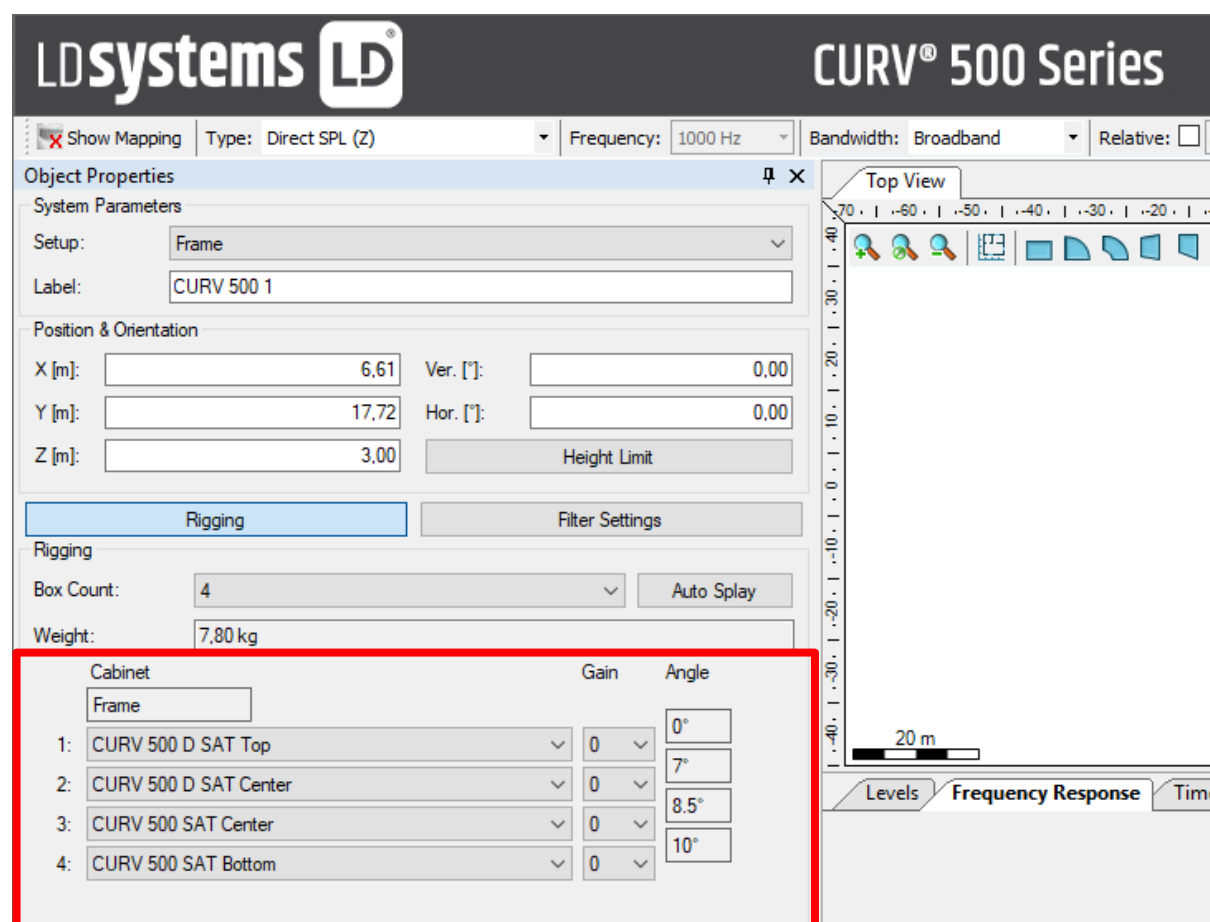
Next, the number of boxes in the loudspeaker array should be indicated under the "Rigging" section, in the "Box count" drop down menu. Maximum 6 boxes can be selected for a single array. A box can be either a CURV 500 SAT (single satellite), or a CURV 500 DSAT (duplex satellite).



Please note, that although in EASE Focus 3 a combination of maximum 6 duplex satellites is possible, in reality only up to 6 single satellites or 3 duplex satellites could be connected together in a single array to a CURV500 SLA (Smart Link Adapter), due to maximum load requirements.

Next step is to define the loudspeaker model for each box position under the "Cabinet" section. Loudspeaker models CURV 500 SAT and CURV 500 DSAT are available in four versions/positions within the GLL file: **Single**, **Top**, **Center** and **Bottom**. **Single** means a single loudspeaker without any additional loudspeakers on top or underneath. **Top** is the topmost loudspeaker in an array combination and **Bottom** the lowest one. **Center** means any loudspeaker(s) between the **Top** and **Bottom**.

As an example, an array consisting of two CURV 500 DSAT loudspeakers on top and two CURV 500 SAT speakers beneath the DSATs should be arranged in the following way: 1: DSAT Top; 2: DSAT Center; 3: SAT Center; 4: SAT Bottom.

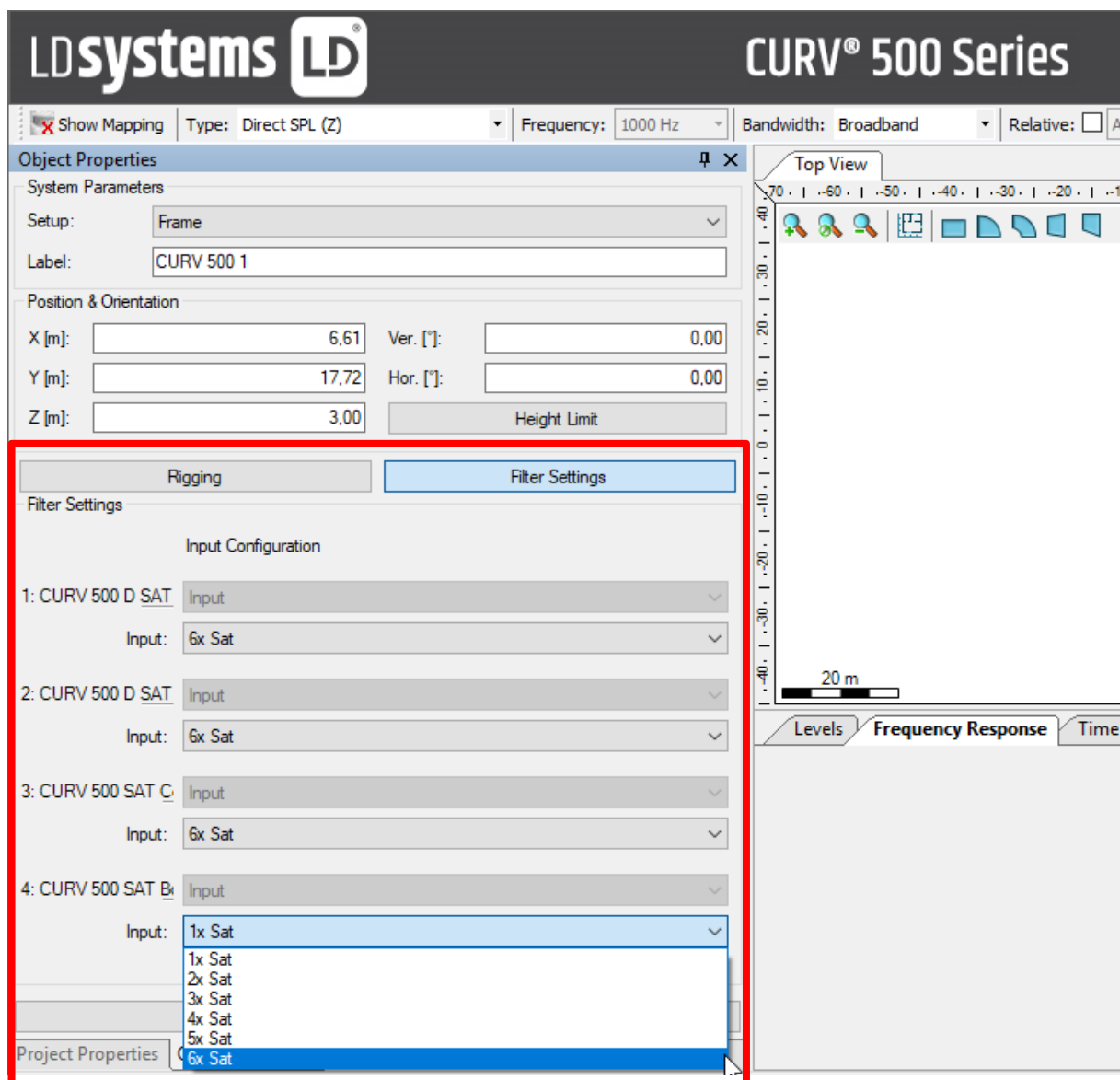


For those speaker satellites selected as **Center**, EASE Focus will automatically indicate the possible combinations. For example, it is not possible to place a single satellite on top of a duplex satellite.

FILTER SETTINGS

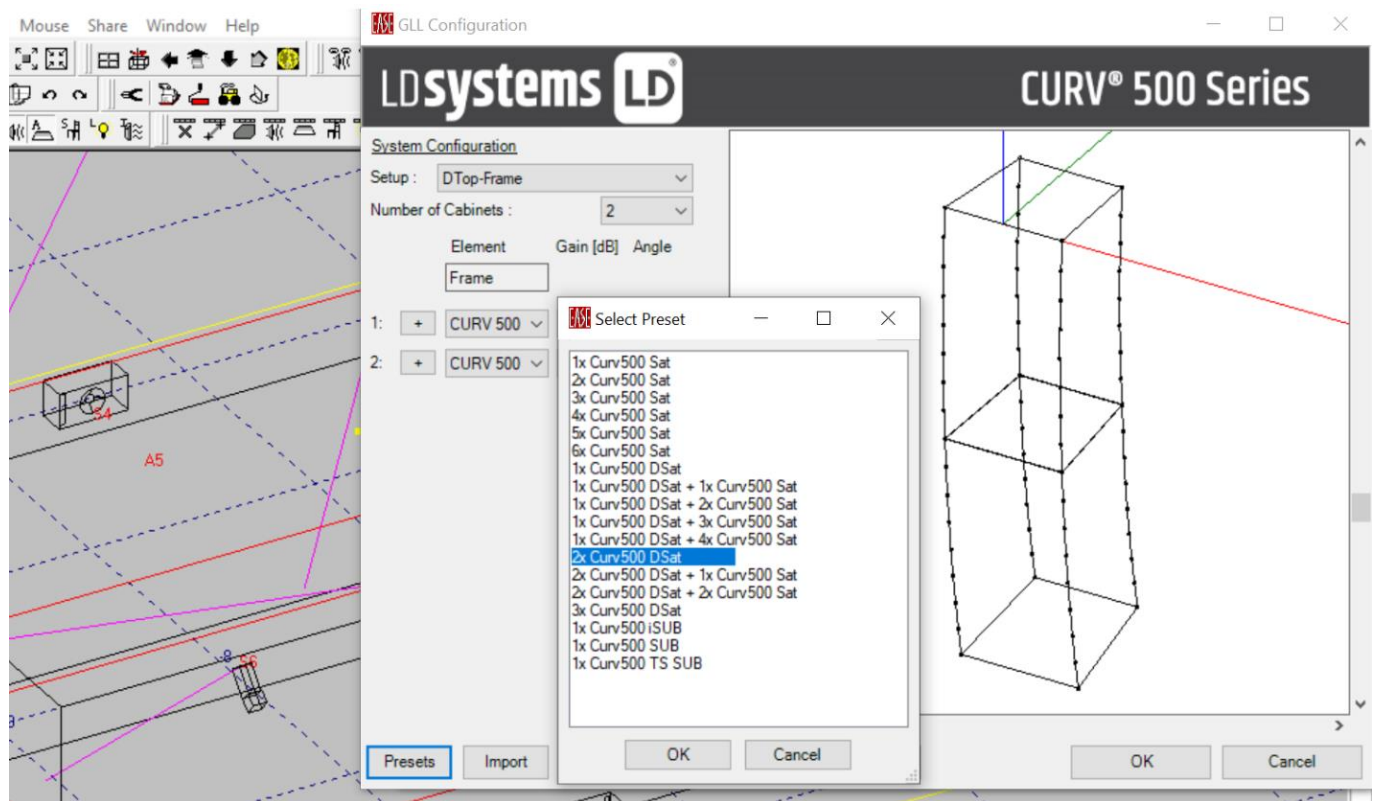
There are up to 6 filter settings for both CURV 500 SAT and CURV 500 DSAT models. Important to know is that one CURV 500 SAT counts as one array unit (1x Sat.), and one CURV 500 DSAT as two (2x Sat.). Once the combination of the array is defined, the appropriate filter settings must be applied under the "Filter Settings" tab. The correct filter setting is determined as the total sum of all array units.

For the previous example (2x CURV 500 DSAT, 2x CURV 500 SAT) the total sum of the array units would be six. This means that the correct filter setting is "6x Sat" and it must be applied on all loudspeakers.



If the user changes the amount of array units, he will need to apply these changes in the filter settings as well.

Please note that the CURV500 presets work fine with EASE/EASE Junior versions. To be able to use all CURV500 presets in EASE/EASE Junior, please load the CURV500-V22_EASE.gll file.



This document explains only the use of CURV500-V04_EASE Focus 3.gll file in EASE Focus 3.